



Customer: WACO Hemp Farm  
 Customer Sample ID: Spectrum  
 Laboratory Number: 19J0109-02



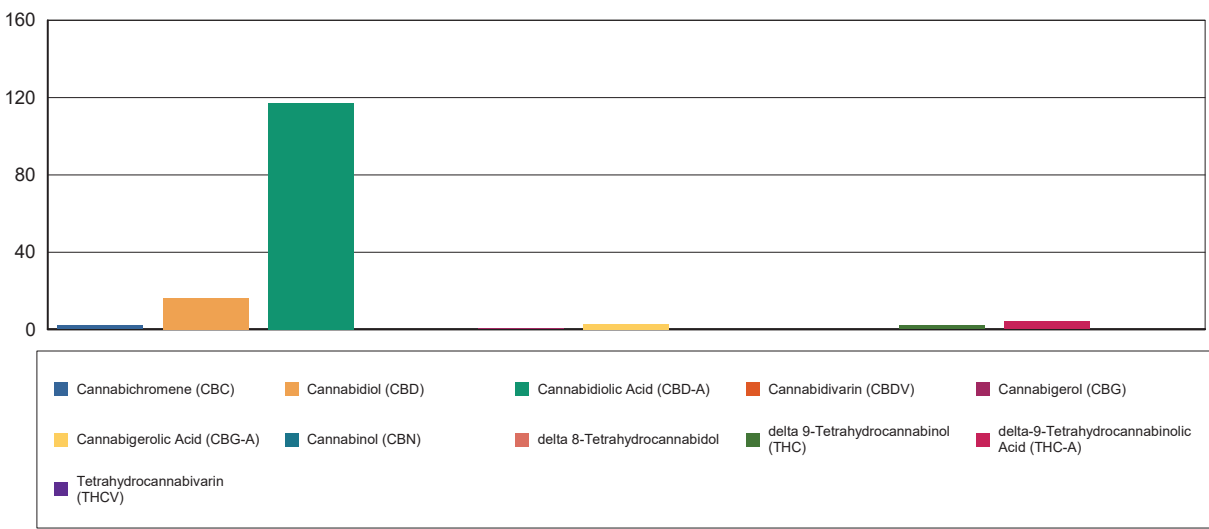
# Cannabinoid Profile

Extraction Technician: DF  
 Analytical Chemist: MF

Extraction Date(s)	Analysis Date(s)
10/4/2019	10/5/2019

Cannabinoids (HPLC)		Results	
	LOD (mg/g)	%	mg/g
Cannabidiol (CBD)	<0.090		
Cannabidiolic Acid (CBD-A)		11.72	117.2
Cannabigerolic Acid (CBG-A)		0.28	2.8
Cannabigerol (CBG)		0.07	0.7
Cannabidiol (CBD)		1.64	16.4
Tetrahydrocannabivarin (THCV)	<0.090		
Cannabinol (CBN)	<0.090		
delta 9-Tetrahydrocannabinol (THC)		0.21	2.1
delta 8-Tetrahydrocannabinol	<0.090		
Cannabichromene (CBC)		0.20	2
delta-9-Tetrahydrocannabinolic Acid (THC-A)		0.41	4.1
<b>Cannabinoids Total</b>		<b>%</b>	<b>mg/g</b>
Max Active THC		0.57	5.68
Max Active CBD		11.94	119.40
T.Active Cannabinoids		2.11	21.10
Total Cannabinoids		14.50	145.00
<b>Ratios</b>			
21.61:1 CBD to THC		0.05:1 THC to CBD	

Cannabinoid (mg/g)



Altitude Consulting, LLC utilizes NIST traceable Reference Standards and Certified Reference Material to calibrate analytical instruments along with proven analytical methods. The methods are applied in the most ethical manner following good laboratory practice guidelines. The results of this report are based solely on the sample submitted and cannot be reproduced.



Customer: WACO Hemp Farm  
 Customer Sample ID: Spectrum  
 Laboratory Number: 19J0109-02



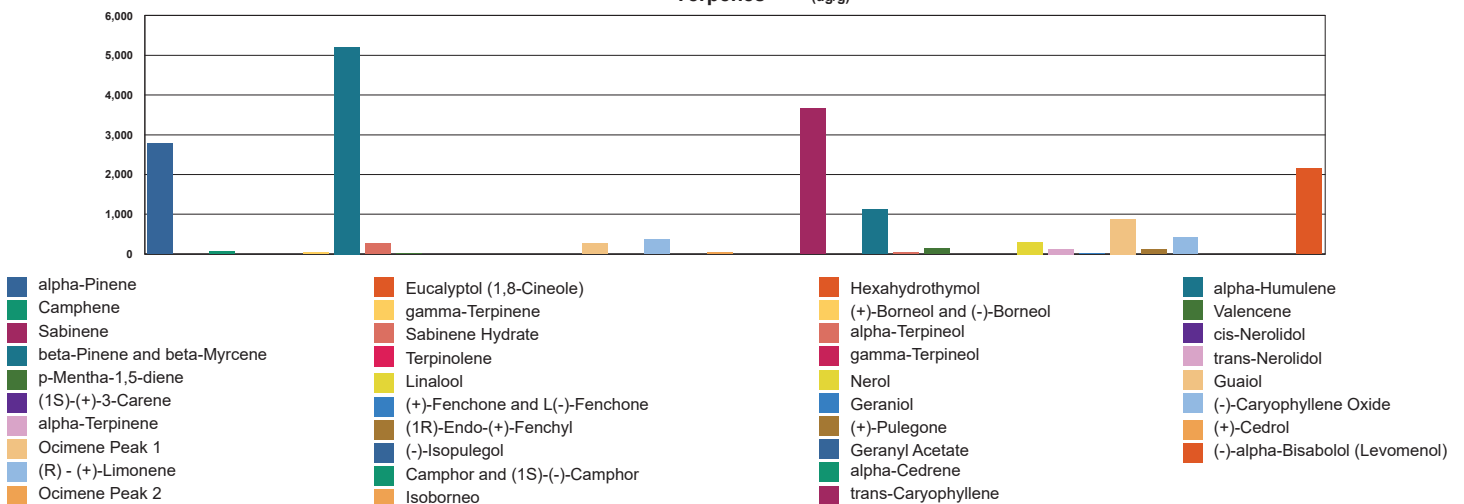
# Terpene Profile

Extraction Technician: DF  
 Analytical Chemist: GB

Extraction Date(s)	Analysis Date(s)
10/4/2019	10/5/2019

Terpene	Results	Terpene	Results
	ug/g		ug/g
alpha-Pinene	2780	Isoborneol	
Camphene	56.6	Hexahydrothymol	
Sabinene		(+)-Borneol and (-)-Borneol	
beta-Pinene and beta-Myrcene	5210	alpha-Terpineol	259
p-Mentha-1,5-diene		gamma-Terpineol	
(1S)-(+)-3-Carene		Nerol	
alpha-Terpinene		Geraniol	
Ocimene Peak 1	271	(+)-Pulegone	
(R) - (+)-Limonene	366	Geranyl Acetate	
Ocimene Peak 2	43.0	alpha-Cedrene	
Eucalyptol (1,8-Cineole)		trans-Caryophyllene	3660
gamma-Terpinene		alpha-Humulene	1120
Sabinene Hydrate	40.7	Valencene	145
Terpinolene		cis-Nerolidol	
Linalool	301	trans-Nerolidol	123
(+)-Fenchone and L(-)-Fenchone		Guaaiol	878
(1R)-Endo-(+)-Fenchyl	115	(-)-Caryophyllene Oxide	423
(-)-Isopulegol		(+)-Cedrol	
Camphor and (1S)-(-)-Camphor		(-)-alpha-Bisabolol (Levomenol)	2140

Terpenes (ug/g)



Reporting limit is roughly 40 ug/g depending on amount extracted.

Altitude Consulting, LLC utilizes NIST traceable Reference Standards and Certified Reference Material to calibrate analytical instruments along with proven analytical methods. The methods are applied in the most ethical manner following good laboratory practice guidelines. The results of this report are based solely on the sample submitted and cannot be reproduced.